

Educating, Assisting, Supporting, and Informing through this newsletter!
 A newsletter for and by parents with sons & daughters with disabilities and education advocates.

Families Together, Inc.

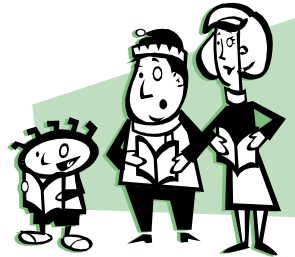
Administrative Center: 3340 W. Douglas, Suite 102, Wichita, Kansas 67203 (316) 945-7747 www.families-together-inc.org
 Wichita Center 1-888-815-6364 * Topeka Center 1-800-264-6343 * Garden City Center 1-888-820-6364 * Kansas City Center 1-877-499-5369
 Statewide Spanish parent line 1-800-499-9443 (All toll free numbers for Kansas parents & education advocates)

Volume 54

Sept. 2002

Families Together Inc. FEWs & PNCs

Submitted by Leia Holley, Kansas City Center



When a child is diagnosed with a disability, their family begins a journey into the world of disabilities. The family begins this journey unaware of the new languages, beliefs and expectations. This "world of disabilities" is full of medical, educational and other professionals who speak strange new languages. They talk of IEPs, IFSPs, IDEA, MRIs, OD, PDD, ADD, LD... as the child and family struggle to find their way. The parents listen as professionals and others express their concern about the child's disabilities. How do parents find their way through this new experience?

Families Together's **Parent Networking Conferences** and **Family Enrichment Weekends** offer unique opportunities for families to share their experiences with other families in a non-threatening and friendly environment. During these free over-night events, families gain support and information.

Parent Networking Conferences are exclusively for parents allowing them a chance to spend time with other parents.

Family Enrichment Weekends offer parents, children/youth with disabilities and their siblings an opportunity to meet individuals who share similar challenges and joys each day. Children are engaged in age-appropriate, inclusive activities throughout the event. University students and other community volunteers are recruited to serve as companions to the children to assist with the activities and ensure safety.

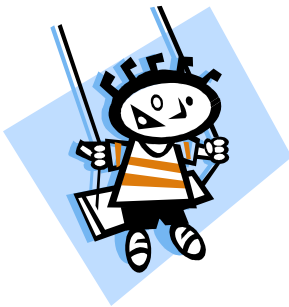
Parent activities at both the Parent Networking Conferences and Family Enrichment Weekends include trainings on: the provisions of the Individuals with Disabilities Education Act (IDEA), development of Individual Education Programs (IEP) and Individual Family Service Plans (IFSPs), community and statewide resources, and funding sources.

Additionally, parents have unique opportunities to share their struggles and successes. Many answers lie with those who are paving the way for other students with disabilities, families who have been there. By sharing stories with other families who are successfully navigating the "maze of special education", not only do parents discover that they are not alone in the journey, but also that it's important to dream. Families share stories about varying stages of the journey, and give hope while sharing key elements necessary to make choices based on their child's individual needs, strengths and dreams.

Inside this Issue...

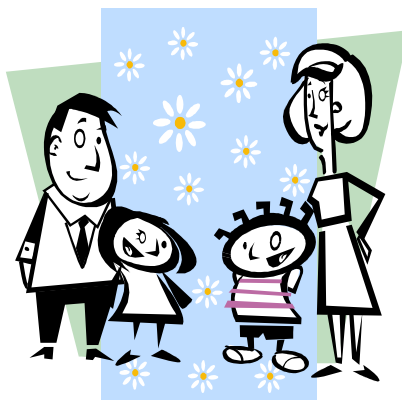


Supported Family Living	p. 2
Self Determination.....	p. 2
Partners in Policymaking	P. 3
Identifying Risk of Abuse/ Neglect Resources	p. 3
Early Communication Project	P.3
Family Story	P. 4
Q & A	P. 4
A Note from the Director's Desk	p. 5
Focus on Kansas Resources.....	p. 6
Internet Resources.....	p. 6
Book Review	p. 7
Autism Research Project	p.7
Sibling Enrichment Program	p.8
Pen Pal Program	p. 8
Mini-conference	p. 9
Calendar of Events.....	p. 10
KATCO.....	P. 10
Statewide Conference Registration.....	P. 11
FEW/PNC Application ...	Insert
Disability-Friendly Credit Union.....	Insert



Supported Family Living

Sometimes a child cannot live with his/her natural family. When this occurs for a child that has a developmental disability, there are few places that will meet the child's unique needs. Fortunately, Lakemary Center has an option called Supported Family Living (SFL). It is a program that specially trains and prepares families to provide a home for a child with developmental disabilities.



her natural family setting that could keep the family together on a long-term basis.

Often times the SFL program is compared to foster care, however there are some differences. The SFL program only serves children with developmental disabilities. The SFL families are specially trained to serve the individual needs of each child placed in their home. The natural family is seen as a co-parent and equal partner. The children placed in the SFL homes are specially matched to the strengths of the SFL family. The SFL families are reimbursed at a significantly higher rate than foster families. Children referred to the SFL program can be referred by their parents, case manager, or may be in SRS custody. The SFL program is like foster care in the fact that the success of the program relies heavily on having quality families to care for, and work with, the children. Lakemary Center has recently received five referrals of children needing a placement, but there are no placements currently available within the program. These children could be placed in an institutional setting, remain in an inappropriate placement, or be referred to other less appropriate placements. If you are interested in providing a home for a child please contact:

Connie Beshore (913)768-6831 ext. 106

Self Determination

Submitted by Connie Zienkewicz, Wichita Center

One of the barriers that people with disabilities sometimes face is that they do not have control of the services that they can access to assist them to live the life of their dreams. There have been efforts over the past several years to help make the funding systems that assist persons with disabilities more flexible through a philosophy called SELF-DETERMINATION.

Bruce Vladeck is an administrator for the Health Care Financing Administration that makes the "rules" for use of Medicaid Waiver funds. He has described SELF-DETERMINATION in this way: "Self-determination is a way of supporting individuals and families in having their needs met in ways that make sense from their point of view. It is not a single program or service type. Rather, self-determination allows persons and their families and friends, in conjunction with professionals, to be decision makers concerning the supports that are needed and how they can best be provided."

If you are interested in this idea, Families Together, Inc. has a limited number of booklets called "Stories from the Free State". "Stories from the Free State" is a collection of anecdotes about people in Kansas who have put self-determination to work for them. Under this funding system, persons with developmental disabilities have gained control over their lives and resources, often for the first time. The Kansas Council on Developmental Disabilities published this booklet. Please call one of the parent centers to request a copy.

There is currently a Think Tank discussing the prospect of allowing self-determination to be used by persons served under other waivers, too. Stay tuned for further developments.



Join the Class of 2002 Partners in Policymaking

Submitted by Josie Torrez, Partners in Policymaking

The Kansas Partners in Policymaking Program is recruiting people with disabilities, parents of children with disabilities, and teenagers with disabilities to participate in its training program which begins March 8, 2002.

Participants learn about current disability issues and best practices. They become familiar with the policymaking and legislative processes at the local, state, and federal levels. They also learn how to advocate for change in public policy, disability services and general disability issues. The overall goal is to establish productive partnerships between people needing and using services and those in a position to make policy and law.

Partners attend monthly two-day training sessions for eight months in Topeka and are required to complete assignments between sessions. Partners also are expected to commit to one major disability-related project within their community.

The program is open to 24 people. If selected, the Partners in Policymaking program will pay for lodging and meals and reimburse participants for travel, childcare, and attendant services.

Applications are now available and will be taken until November 16, 2002. For more information on Partners in Policymaking or to request an application, contact:

Josie Torrez
915 SW Harrison, Room 141
Topeka, Kansas 66612
or call toll free 1-877-431-4604.

You may also e-mail at jtorrez@midusa.net.

Identifying Risk of Abuse/Neglect Suggested Resources/Websites

Here are some resources that are available to professionals and parents on awareness and prevention:

Local Resources:

- Beach Center 785-864-7600
- SRS Abuse and Neglect Hotline 1-800-922-5330
- Kansas Children Service League Parent Hotline 1-800-332-6378

National Resources:

- The Arc of the United States, 1010 Wayne Ave, Suite 650, Silver Springs, MD 20910
- CHTOP, Inc., 800 Eastowne Drive, Suite 105, Chapel Hill, North Carolina 27514
- The National Task Force on Abuse and Disabilities, PO Box "T" Culver City, CA 90230
e-mail: abuses@soca.com
- The National Committee to Prevent Child Abuse, 332 S. Michigan Ave, Ste 1600, Chicago, IL 60604, 1-800-555-3748

Early Communication Breakdown & Repair Research Project

Submitted by Tammy Steeples, University of Kansas Lifespan Institute

Several families participated last year, and we thank them again. We invite additional children 3-5 years old who communicate with gestures or single words and their mothers to participate now. We can offer you mileage (up to \$35 per trip) and gift certificates (\$20) from your choice of Wal-Mart or McDonalds. We do Saturday or evening appointments if preferred, and families can participate in Lawrence or at the KU Medical Center in Kansas City. If you would like to be involved or get more information:

- Contact Dr. Tammy Steeples in Lawrence at: 866-591-3084 (toll free), 785-312-5364 or steeples@ku.edu
- Write to us at:
University of Kansas
Lifespan Institute
1315 Wakarusa Drive, Suite 105
Lawrence, KS 66049

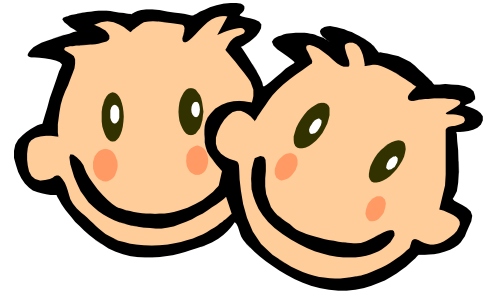
Let us know the best time and way to contact you, and we will get in touch with you.

Family Story

The Two Amigos

Written by James Harris-Beaudry

Take one good look at James and Jared Zielinski and you may notice some obvious physical differences in them, but get to know them and you will find out just how normal they are. James, who is 15 years old and will be a sophomore in high school and Jared who is 14 years old and will be a freshman in high school like to do anything and everything any regular kid their age would like to do. They just want to fit in with everyone else and that they do.

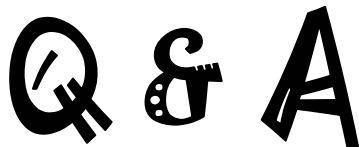


Their mother, Cindy Zielinski found out that her son James, the older of the two, had Down syndrome when he was two months old. When she was pregnant with Jared, she had a test done, and she found out that he would also have Down syndrome. They gave her a choice whether to keep him or not and she felt like he had the right to live just like everyone else. She felt this was a good decision. Take a look at the two brothers today and that was more than a good decision. These two brothers are like two peas in a pod and nobody can take away that brotherly love from them.

The boys grew up in a big city in Michigan called Saginaw. They went to a school for children with disabilities and were not included. This made it hard for them to make friends. It was also hard for them to learn the things that they wanted to learn.

When Jared and James turned 13 and 14, they moved to a little town in Kansas called Deerfield. Their mother, Cindy, says moving to Deerfield has made such an impact in their lives. They have just blossomed since they have been there. They are included in the regular classroom in the Deerfield Schools. They are very active in school, helping out with the football team, singing in the choir, and enjoying their classes. James says his favorite classes are weightlifting and "lunch," while Jared likes all of his classes, especially PE. One favorite thing that they both share about being in the school is going to the school dances. They both love to dance. In fact, James, a freshman, went to the High School prom with a senior and Jared won a dance contest when he was in 7th grade. They have many friends and enjoy hanging out with them, and spending the night with them. And who can forget their favorite phrase, "What's up, dawg?" Any of their friends will tell you that they always have a way to brighten the day.

In the future, the boys would each like to find a woman that's perfect for them and get married. Jared says he has already found the right girl for him – a girl up in Michigan named Sarah and he is determined to marry her. They both would like to get jobs and James' dream job is to become a rap artist, because he loves rap music. They both have a wonderful future ahead of them.



Is the school responsible for providing social interaction with peers for my child?

It is the responsibility of the IEP team to address the needs of the child. If your child needs socialization, then there should be goals and objectives to help the child in that area of development. One area of the law that addresses this issue is the least restrictive environment. Children with disabilities are to be educated with their peers without disabilities. If this is not possible because of the child's specific needs, the child is placed in the least restrictive environment appropriate for the child. This setting does not prevent the child from having peer interaction. There are many other ways to provide social interaction with peers. Some of these activities are athletics, school clubs, social agency groups and county recreational facilities. IDEA states that these activities can be included in the IEP.



Your Gift Can Make A Difference!

Your gift of:

\$60... will help a family attend a statewide conference.

\$50... will provide toll-free line access to parents for an entire week.

\$25... will provide a new book for the free lending library.

\$10... will provide information packets to families.

\$5... will provide newsletters to 20 families.

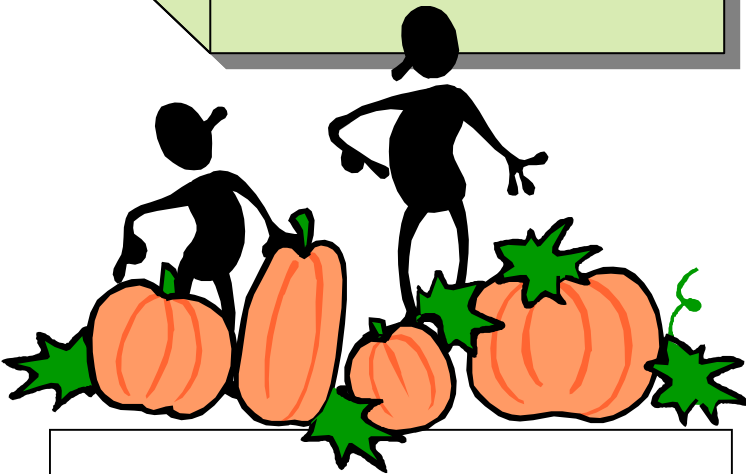
Enclosed is my tax-deductible donation of \$_____.

Send to:

**Families Together, Inc.
3340 W. Douglas Ste. 102
Wichita, KS 67203**

**Families can designate an organization when they give to United Way or to the Combined Federal Campaign.*

Thank you!



**Need information on...
disabilities
special education
related services
family issues
IEPs
Transition?**

**Call us or visit
our website!**

**1-800-695-0285
www.nichcy.org**

A Note From the Director's Desk...



Dear Families and Advocates:

The staff at Families Together, Inc. is very excited to announce the schedule of weekend events for this school year. The theme for the events is Travel and the "trip" that our lives can be from time to time. We hope that you will plan to join us for one of the Parent Networking Conferences or a Family Enrichment Weekend. Applications are accepted on a "first come first served" basis with consideration given to families that have not attended a weekend event in the past school year.

Another current issue that will be affecting families in Kansas is a bill passed by the legislature last spring. That bill requires parents to contribute financially to the care of their minor children who receive "In Home Support" through an HCBS waiver for Medicaid. The main provisions in the proviso state that no one under 200% of federal poverty level will have to pay a fee. It is also important for families to understand that the amount of the fee will not be tied to the amount of services received. In addition, since it is a proviso, the legislature would have to take additional action next session to extend the fee beyond June of 2003.

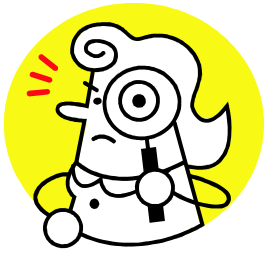
If you have not received a letter from Social and Rehabilitations Services (SRS) about this payment, it should be available soon. Letters were due to be sent to families the week of August 26th. If you have questions about this matter after you get the letter, our staff will try to help you understand or direct you to persons at SRS who can assist you.

Although this may be an unwelcome change, the legislators felt that parents should pay for the services to minor children with disabilities, as do other persons that get services from SRS.

Remember that our goal as parents is to be an equal and contributing member of our child's school TEAM (Together Everyone Achieves More).

Best wishes for a successful school year for you and your children!

Connie



Focus on Kansas Resources

Families Together toll free numbers:

Wichita	1-888-815-6364
Topeka	1-800-264-6343
Kansas City	1-877-499-5369
Garden City	1-888-820-6364
Spanish line	1-800-499-9443
NC Region	1-866-778-7710 <i>or</i> 1-866-963-1734
NW Region	1-866-775-7710
SC Region	1-866-884-8810
SE Region	1-877-948-3049

Make A Difference Information Network 1-800-332-6262

An information service for children and adults with disabilities, their families, and their service providers.

Autism Support Group

Topeka/Lawrence Chapter
Schieffebush Clinic
Haworth Hall - Rm. 2132
University of Kansas
Lawrence, KS
785-286-3473 (Jann Gray, Topeka)
785-842-9836 (Judy Talbot, Lawrence)
email - carz@networksplus.net

Kansas Children's Service League Parent Help Line: 800-332-6378

Free, anonymous telephone counseling service available for parents with questions or problems. Referrals made from anywhere in Kansas - *"Because kids don't come with instructions."*

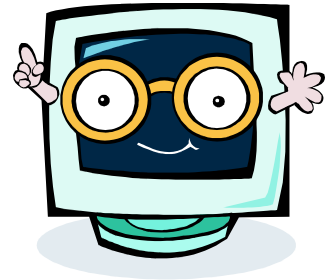
Assistive Technology for Kansans

Brenda Eddy
517 B SW 37th
Topeka, KS 66611
785-267-1717
Beddy@kscable.com

Keys for Networking

1301 Topeka Blvd.
Topeka, KS 66612
785-233-8732

Check Out these Internet Resources!



The Children's Literature Web Guide

www.acs.ucalgary.ca/~dkbrown/index.html

Features:

- What's New!
- What We're Reading: Commentary on Children's Books
- Web-Traveler's Toolkit: Essential Kid Lit Websites

American Bar Association Center on Children and the Law

www.abanet.org/child/home.html

The goal of ABA Children's Law Division is to improve the lives of children through advances in law, justice, knowledge, practice, and public policy. This site includes child welfare tips and a lot of great child advocacy links.

Cultural Competence Web Site

www.air.org/cecp/cultural

Information, resources, and links to other World Wide Web sites provided by the Center for Effective Collaboration and Practice.

Children and Adults with Attention Deficit Disorder (C.H.A.D.D.)

www.chadd.org/

CHADD works to improve the lives of people with Attention Deficit/Hyperactivity Disorder through education, advocacy, and support. Great information on ADD and disability issues in the legislature.

American Academy of Child and Adolescent Psychiatry

www.aacap.org

The American Academy of Child and Adolescent Psychiatry would like to assist parents and families in understanding developmental, behavioral, emotional and mental disorders affecting children and adolescents. The website includes journal information, facts/resources and information on legislation.

Youth & Family Directory

www.youthtreeusa.com

Search this directory to find real life youth and family programs and services in your own neighborhood and nationwide.

Check this out → www.publicagenda.org/specials/specialed/specialed_sources.htm



Sometimes Miracles Hide: Stirring Letters from Those Who Discovered God's Blessings in a Special Child

By Bruce Carroll

Submitted by Connie Zienkewicz, Wichita Center

Several months ago, a delightful book arrived at the Wichita Center as a promotion. As I read it, I laughed, cried and "just related" to the letters written by other parents of children with disabilities. The pictures are beautiful and the text of a song written as a tribute to the value of every child is interspersed throughout the book. As a bonus, this book comes with a CD of the song that inspired the "letter writers" to correspond with the artist.

I have recommended this book to families that have just discovered that their child is "special" and to a family that had recently experienced the loss of their child with disabilities. It is a comfort to know that other families have experienced the same struggles and have found a way to smile and eventually to appreciate the struggle.

There are other reviews of this book on the Amazon.com Website. If you would like to check out this book, please call the Wichita Center.



Autism Research Project

*Submitted by Christa Anderson,
University of Kansas,
Schiefelbusch Life Span Institute*



Children with autism, children with developmental disabilities, and typically developing children are needed to participate in an autism research project at the University of Kansas. We are looking for children who are between the ages of 2 and 5 years of age. They should be free of hearing or vision difficulties or other serious health problems such as heart disease, or any motor impairments.

The purpose of the research project is to determine if locus coeruleus activity is dysfunctional in children with autism. The locus coeruleus is an area located in the brain stem, and it is involved in the development of a type of attention that prepares us to respond to unexpected events. Therefore, this project will use activities that elicit this type of attention and will indirectly measure the activity in the locus coeruleus.

Each child will be given a standardized intelligence assessment, a standardized assessment of autism, and will complete a visual stimuli task. The standardized intelligence assessment will consist of a variety of activities that your child will be asked to complete. The standardized assessment of autism will be completed while your child participates in free play with toys at our Lawrence office. Finally, a visual stimuli task will be conducted at our Lawrence office in which your child will be in a car seat and will be shown several pictures. While they are looking at the pictures, their eye movements and pupil diameters will be recorded. In addition, your child's heart rate will be monitored while they are looking at the pictures.

Participation would require 2 sessions, one 1.5 hour session, and one 30 minute session one week later.

If you are interested in participating in this research project or if you have any further questions, please contact us directly at our Lawrence office.

785-312-5345

(please ask to speak with Christa Anderson or leave a message if no one is available).

Sibling Enrichment Program

Submitted by Kristen McFarren, Kansas City Center

Families Together, Inc. is developing a Sibling Enrichment Program and we want your help! This opportunity will be open to siblings of all ages who have brothers or sisters with



any disability or chronic illness. We would like your input as we develop a sibling workshop for community members, parents of children with disabilities and siblings too! In the future, we will also facilitate

networking activities for siblings. Send in your ideas and suggestions to the Kansas City Parent Center, Attn: Kristen, 6811 W 63rd St, Suite 117, Overland Park, KS 66202 or contact your local Parent Center.

Be sure to check out our new sibling webpage! Go to www.familiestogetherinc.org and click on the "Sibling" link for resources, stories and strategies for parents and siblings.

Funding for the Sibling program will come from a fundraiser through **SchoolCash.com!** When you shop at over 250 participating merchants on SchoolCash, up to 30% of every purchase goes to Families Together.

To participate:

- Go to <http://schoolcash.com>.
- Fill out the quick, one time registration and select Families Together Inc. as your group.
- Click on a merchant to start shopping!



KANSAS CITY AREA SIBSHOPS:

Children's Mercy Hospital and the Jellybean Conspiracy are hosting Sibshops for siblings (ages 7-12) of kids with disabilities and chronic illnesses.

- September 21, 2002 - Sibshop for Sibs of Kids with Developmental Disabilities
- September 28, 2002 - Sibshop for Sibs of Kids with Medical Challenges

These are sibling-only events and cost just \$10. For more information on these sibshops, call Kristen at the Kansas City Parent Center at 1-877-499-5369. For more information on Sibling Resources in your area, please contact your local Parent Center.

Pen Pals

The Pen Pal Program now includes healthy children, too! It's for any child who is between 5 and 17 years of age, and

- who has a life threatening illness;
- who has a chronic illness, condition or disability;
- who has lost a parent or sibling due to death, divorce, separation, incarceration, or military deployment;
- who has a seriously ill parent or sibling.

Contact:

Children's Hopes & Dreams-Wish Fulfillment Foundation

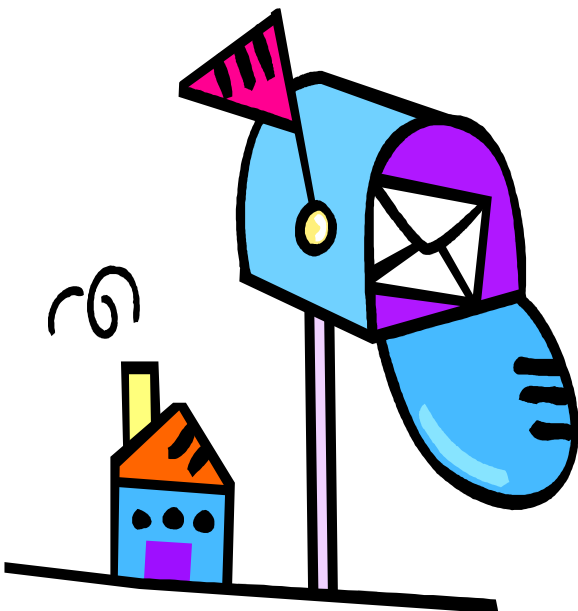
280 Route 46

Dover, NJ 07801

Phone: 973-361-7366

Fax: 973-361-6627

Email: CHDFpenpal@juno.com



FAMILIAS UNIDAS, INC. MINI-CONFERENCIA

Sabado, Septiembre 21, 2002

10:00 a.m. hasta 2:30 p.m.

Edificio Comisión de Anciano

2005 Kansas Street

Great Bend, Kansas

El personal bilingüe de Familias Unidas presentará esta Conferencia:

SOLAMENTE EN ESPAÑOL

La Ley de Educación Especial

Esta taller le informará de sus derechos y responsabilidades como perfilado en la Acta de Educación de Individuos con Incapacidades.

IDEA protege el derecho de su hijo o hija a una educación pública gratuita apropiada en el ambiente menos restrictivo.

Esta mini-conferencia esta limitado. Regístrese antes de: 13 de Septiembre, 2002.

1-800-499-9443 (español) o 1-888-820-6364 (voz)

No hay costo para esta mini-conferencia y almuerzo esta suministrado.

Familias con hijos/jovenes con incacapacidades, educadores, provecrdores de servicios y otras personas que tienen interés estan aminados atender.



FAMILIES TOGETHER, INC. MINI-CONFERENCE

Saturday, September 21, 2002

10:00 a.m. to 2:30 p.m.

At the: Commission On Aging Building

2005 Kansas Street

Great Bend, KS

Families Together bilingual staff will provide presentations, in **SPANISH ONLY**, on:
Parents' Rights and Special Education Law

This workshop will inform you of your rights and responsibilities as outlined in the Individuals with Disabilities Education Act.

IDEA protects your son's or daughter's right to a free, appropriate public education in the least restrictive environment.

Registration for this conference is limited. Pre-register by September 13, 2002.

1-800-499-9443 (español-Spanish) or 1-888-820-6364 (voice/TDD)

There is no charge for this mini-conference and lunch will be provided.

Families of children/youth with a disability, educators, service providers and other interested persons are encouraged to attend.



Fall 2002 Calendar of Events



Date	Event	Contact
<i>Sept. 14, 2002</i>	<i>Families Together Mini-Conference, Miami County</i>	<i>877-499-5369</i>
<i>Sept. 21, 2002</i>	<i>Families Together Hispanic Mini-Conference, Great Bend</i>	<i>800-499-9443</i>
<i>Oct. 1, 2002</i>	<i>Head Start & Children with Disabilities Conference, McPherson</i>	<i>785-368-6354</i>
<i>Oct 4-5, 2002</i>	<i>Families Together, Inc. Parent Networking Conference, Kansas City</i>	<i>877-499-5369</i>
<i>Oct. 12, 2002</i>	<i>Families Together Statewide Conference, Garden City</i>	<i>888-820-6364</i>
<i>Oct. 13, 2002</i>	<i>Families Together Mini-Conference, El Dorado</i>	<i>888-815-6364</i>
<i>Nov. 8-9, 2002</i>	<i>Families Together Parent Networking Conference, Hutchinson</i>	<i>866-884-8810</i>
<i>Nov. 15, 2002</i>	<i>8th Annual Transitioning into Developmentally Appropriate (TDAP) Conference, Wichita</i>	<i>Misty Goosen 785-864-0725</i>
<i>Nov. 15-16, 2002</i>	<i>Families Together Parent Networking Conference, Topeka</i>	<i>800-264-6343</i>
<i>Nov. 23, 2002</i>	<i>Families Together Mini-Conference, Kansas City, MO</i>	<i>877-499-5369</i>
<i>Dec. 6-7, 2002</i>	<i>Families Together Parent Networking Conference, Arkansas City</i>	<i>888-815-6364</i>

Kansas Assistive Technology Cooperative

Submitted by Basil Kessler, KATCO

Assistive Technology changes lives! If you or a family member of yours is a person with a disability and in need of an assistive technology device, i.e., hearing aids, communication devices, hand controls or lifts for a vehicle, home modifications, wheelchairs or scooters, CCTVs, etc., you may be eligible for a low interest loan through KATCO.

KATCO is a consumer-run, financial loan guarantee program established to allow people with disabilities, or members of their families, to borrow money to purchase assistive technology that is used to improve their quality of life.

If you are interested in obtaining a loan, please contact: KATCO at 1-866-465-2826 or their Assistive Technology Regional Access Site by calling: 1-800-KAN-DO-IT (800-526-3648)

Kansas Assistive Technology Cooperative
 625 Merchant, Suite 210
 Emporia, Kansas 66801
 Phone: 620-341-9002
 e-mail: ***ebk@birch.net***

Independence is Priceless... We Help Make It Affordable



"Leave No Child Behind"

Saturday, October 12, 2002

7:45 a.m. - 3.45 p.m.



Plaza Inn, 1911 E. Kansas Avenue, Garden City, Kansas

A Statewide Conference Presented by

Families Together, Inc.

Featuring:

Christian Moore

Christian is a licensed Clinical Social Worker, with an M.S.W. from Brigham Young University. Christian is the CEO of the Why Try Program. He uses the Why Try combined with stories from his own life to help youth with conduct disorder and learning differences see how they can function in society and be successful in life.

Just a few of the Break-out sessions available:

Juvenile Justice Association - presented by Julie Wright

Autism - presented by Lee Stickle

Transition - presented by Wendy Blaauw

Post Secondary Education - presented by Sheryl Ratliff

Advocacy - presented by LINK



Registration Form

Return by October 8, 2002

Please submit one registration form for each person attending

Name _____

Mailing Address _____ City _____ State _____ Zip _____

Phone _____ (Home) _____ (Work)

_____ Parent _____ Educator _____ Other (please specify) _____

Registration fee: \$30.00 for parents
\$40.00 for professionals

_____ Check enclose _____ Purchase order - # _____

A limited number of parent scholarships are available through Families Together, Inc. Parents should call (620) 276-6364 or 1-888-820-6364 to request a scholarship. Scholarships cover registration fee only.

A block of rooms under Families Together is available at the Plaza Inn. You are responsible for your own room.

The Plaza Inn is accessible.

Individuals requiring special accommodations should contact Families Together by October 8, 2002.

Lunch is included in the registration fee.

Mail to: **Families Together, Inc.**
111 Grant Avenue
Garden City, KS 67846

Please Check your mailing label

You can help us keep our mailing list current and save postage by letting us know:

- if your address has changed or is incorrect;
- if you are receiving duplicate copies; or,
- if you would like to be removed from the mailing list.

Please send your label with corrections to Susan at the Topeka Center.
501 SW Jackson Ste 400
Topeka, KS 66603

Thanks!



Families Together, Inc.
501 Jackson, Suite 400
Topeka, KS 66603

Address Service Requested

Non-Profit Organization
**U.S. POSTAGE
PAID
Permit No. 849
Topeka, Kansas**